

# Do you wish to purchase steel or non-ferrous products in CIS?



## We'll help you!

### **WinPlant - Automated Directory of CIS Steel and Metal Plants**

**Information on more than 500 steel and non-ferrous manufacturers in CIS and Baltic States and their products**

#### **Information on each plant includes:**

- mail address, contact phone and fax nos. of main departments, E-mail address, Web-site;
- list of main product traders and their contact data;
- list of main process equipment;
- detailed information on products with references to standards on assortment and specifications, with indication of grades and main dimensions.

#### **WinPlant database consists of two parts:**

- WinPlant. BLACK** - includes information on producers of steel and iron;
- WinPlant. RED** - contains data on manufacturers of non-ferrous products.

**Information in WinPlant database is currently corrected and updated. Every three months we issue new software releases.**

**Quantor-Soft Metal**  
Phone: +7 495 234 4905  
Fax: +7 495 232 3996

Mail address: P.O.Box 39, 119049 Moscow, Russia  
E-mail: [inform@metaldata.info](mailto:inform@metaldata.info)  
Web: [www.metaldata.info](http://www.metaldata.info)

## Features:

- Ability to find plants manufacturing steel or non-ferrous products you need;
- Ability to get detailed information on products manufactured by any plant;
- Inquiry information on Russian steels and alloys and present-time standards.

## Benefits:

- Fast searching of manufactures of products you need within seconds;
- Ensure that you have the most complete and up-to-date information on CIS steel and non-ferrous plants;
- Printing and saving in HTML, TXT and XML files data on plants and their products;
- Context Help and comprehensive User's Guides with illustrations of operation with the software;
- Possibility to operate with all major network hardware and software.

## With your purchase you receive:

- Unlimited license to use the software;
- Our technical Support Service;
- New software releases every quarter without additional payments during the warranty period of 12 months;
- Free access to the Online software versions during the warranty period;
- Ability to subscribe to our Annual Support Service on completion of the warranty period;
- Hot information on new software versions with ability to buy upgrades.

## Order Form

Software	For single PC	Multi - User		Amount
		2-5 Users	6-10 Users	
WinPlant. BLACK	€350 - ____	€525 - ____	€700 - ____	€ ____
WinPlant. RED	€350 - ____	€525 - ____	€700 - ____	€ ____
WinPlant. BLACK + RED	€630 - ____	€945 - ____	€1260 - ____	€ ____
Delivery by courier				€50
Total Amount				€ ____

Name / Position \_\_\_\_\_

Company \_\_\_\_\_

Address \_\_\_\_\_

Tel \_\_\_\_\_ Fax \_\_\_\_\_ E-mail \_\_\_\_\_

**Please send me Invoice for wire payment**

**Please debit my card:**

VISA

MasterCard / EuroCard

Card Number \_\_\_\_\_

Valid Thru \_\_\_\_\_

CardHolder \_\_\_\_\_

CVC2 / CVV2 \_\_\_\_\_

Date \_\_\_\_\_

Signature \_\_\_\_\_

**Quantor-Soft Metal**

Phone: +7 495 234 4905

Fax: +7 495 232 3996

Mail address: P.O.Box 39, 119049 Moscow, Russia

E-mail: [inform@metaldata.info](mailto:inform@metaldata.info)

Web: [www.metaldata.info](http://www.metaldata.info)

# Automated Directory of CIS Non-Ferrous Plants WinPlant. RED

---

## What are the Main Advantages of WinPlant. RED over the Plant Product Catalogues?

- The WinPlant. RED software combines catalogues of more than 320 plants. It allows to save your time providing fast search of manufacturers of non-ferrous products you need.
- Search in the WinPlant. RED software is multichoice. Operating with the program you are able not only to learn which products are manufactured by any plant but also to find plants which manufacture the products required by you.
- Information in the WinPlant. RED database is constantly updated. Operating with the software you can be sure that your PC contains the most up-to-date data on CIS non-ferrous plants and their products.

## What Does WinPlant. RED Differ from the Similar Software by?

- We offer you not only complete database with information on products manufactured by different plants in CIS but also the software providing simple and efficient operation with the database involved.
- Search for manufacturers in the WinPlant. RED software is carried out by several criteria: product type, standards (GOSTs, TUs or foreign) on assortment and specifications, alloys and dimensions.
- The WinPlant. RED database has a high-optimized structure. Information on all non-ferrous products manufactured by 320 plants in Russia, Ukraine and other CIS countries takes 32 MB on hard disk of your PC only.
- All information in the WinPlant. RED database is constantly corrected and updated. Every quarter we issue new software releases, which you will receive free of charge during the warranty period of 12 months.
- Besides offline software version on CD-ROM we'll give you access to WinPlant. RED Online. It allows you to get required information even when you are out of your office.
- WinPlant. RED possesses friendly interface provided with the comprehensive User's Guide with illustrations of operating with the software and Help.

# Automated Directory of CIS Non-Ferrous Plants

## WinPlant. RED

---

### General Information

**WinPlant. RED** is original user-friendly software for searching manufacturers of required non-ferrous products in Russia, Ukraine and other CIS countries.

#### **The WinPlant. RED software helps you:**

- to obtain detailed information on plants and their product ranges;
- to find plants, which manufacture non-ferrous products of your concern;
- to get reference data on alloys and valid standards.

### **Database**

#### **Information on Plants**

The database of **WinPlant. RED**, ver. 4.0 software includes information on more than **320 plants and holding companies** in CIS and neighboring countries, which produce:

- *ingots and concast billets,*
- *flat rolled products,*
- *rolled, extruded and drawn long products,*
- *tubes and pipes,*
- *wire,*
- *rolled-formed profiles,*
- *wheels, tyres, rings,*
- *forgings,*
- *anodes and cathodes,*
- *solders.*

Information on each plant includes:

- mail address, contact phone and fax nos. of main departments, e-mail and web-site addresses;
- data on product quality certificates;
- list of main product traders and their contact data;
- list of main process equipment;
- detailed information on products manufactured by the plant.

#### **Information on Products**

The information on non-ferrous products made by each plant includes:

- *name of a product* according to classification applied in the software;
- name of a product *assortment* with reference to relevant standard (GOST, TU or foreign);
- reference to standard for *specifications* of the product;
- list of *alloy grades* the product is manufactured from;
- main *dimensions* of products.

Moreover, the database incorporates information on *equipment* non-ferrous products are made at and some additional data on manufactured products (the *Remark* field).

The database employs *the classification of non-ferrous product types* presented in the Figure in tree form. The upper tree level is the names of ten general product groups included into the database (*anodes and cathodes, concast billets and ingots, flat rolled products, forgings, long products, roll-formed profiles, solders, tubes and pipes, wheels, tyres, rings, wire*). The next tree levels are the names of product types within each group.

In the classification, each type of non-ferrous product is related to standards (GOSTs, TUs or foreign ones) according to which this product is made. Here the standards are divided into two groups:

- *Standards on assortment*, which define a product geometry (dimensions, tolerances, etc.);
- *Standards for specifications*, which define mechanical and other properties of a product.

Besides GOST numbers and names, the database also contains information on validity of standards and data on what obsolete standards they replaced.

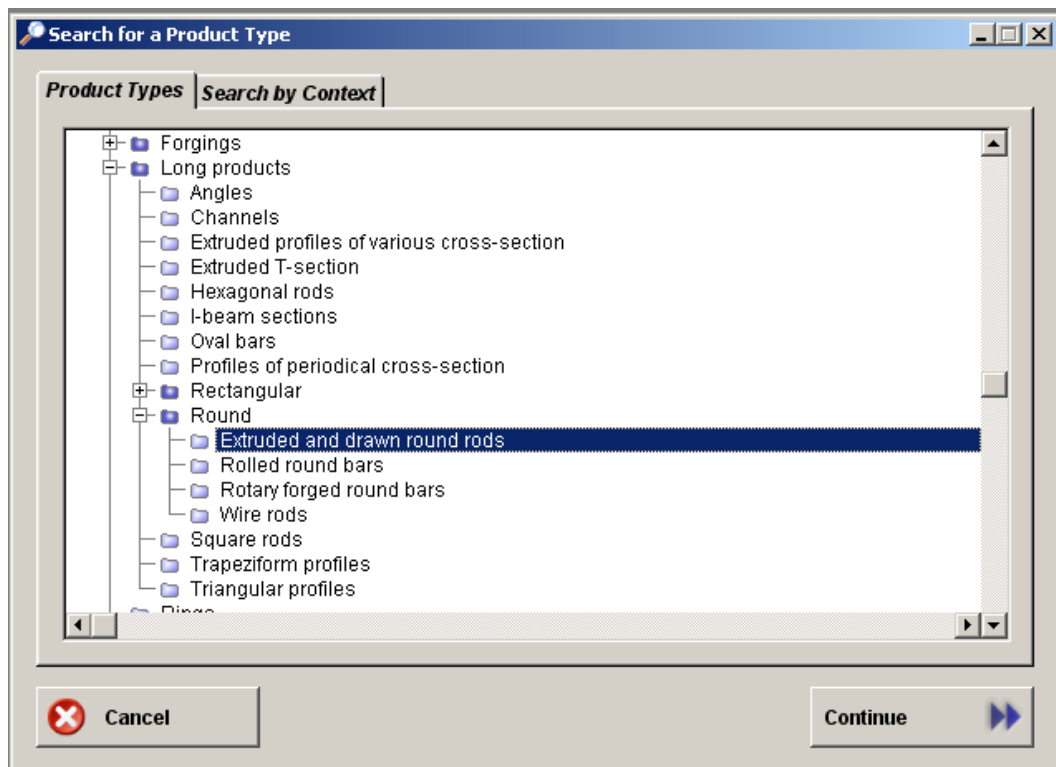
# Automated Directory of CIS Non-Ferrous Plants

## WinPlant. RED

### How to Find Required Information in the Database

#### Search Criteria

The criteria of search are identified in two stages. At the first stage the required product type is selected using the tree presented in the Figure. At the second stage the parameters (additional criteria) according to which the search procedure will be carried out and the value of these parameters are input.



Two ways are possible to select required product type: *by shifting with step-by-step manual extracting* of required tree branches or *by context*. *Context* is a fragment of non-ferrous product name. It can completely or partially coincide with the name of one of the product tree branches or it can be a part of the name of the product assortment (or standard) in accordance with which the product is made.

You can use the following parameters for the search for manufacturers of the selected product type:

**Search by Plant.** The parameter of search by plants is intended to select producers, which will be included into the search process. Here three variants are possible:

- to search *among all the plants* included into the software database;
- to search only among plants located in one *region*;
- to search only among plants *selected* directly by a user.

**Search by Assortment.** When using this parameter you can limit your search only to the product, which is made according to the required standards for assortment. At that you can select one or several assortment standards for the search.

**Search by Specifications.** This search parameter is used for the same purpose as the preceding one. On its selection, you can limit your search to desired standards for specifications of the products.

**Search by Alloy Grades.** This search parameter will permit non-ferrous grades used for product making to be selected. The required grades are selected in the total list, which includes all alloys referred to in the database.

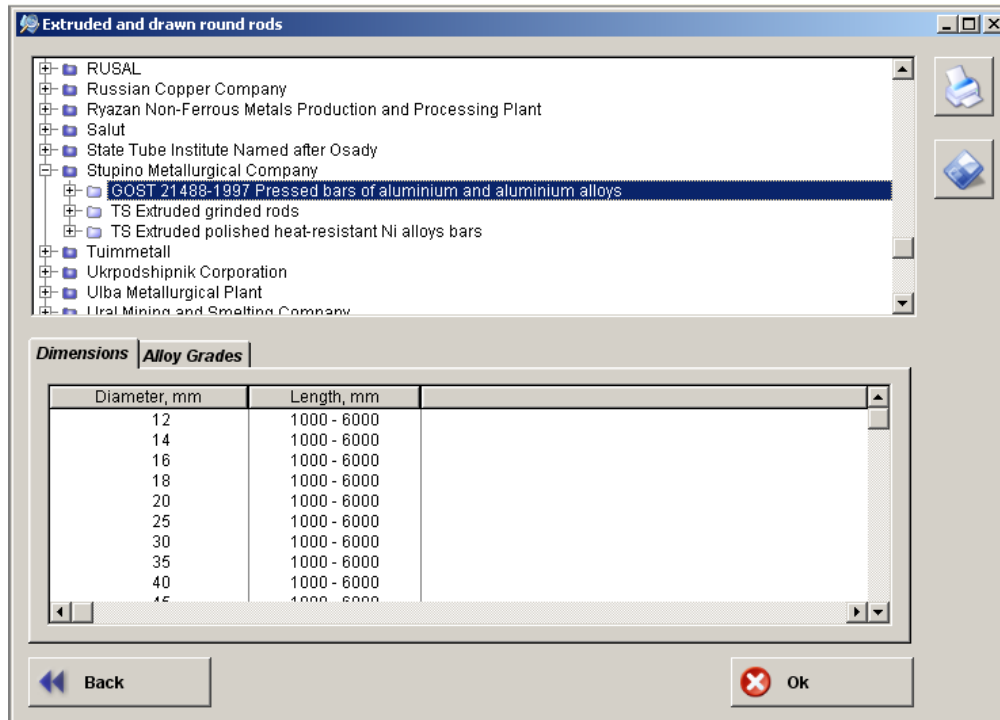
**Search by Dimensions.** Here you can input required non-ferrous product dimension limits. You can use only the necessary dimension values. The other dimension values will not be taken into consideration.

# Automated Directory of CIS Non-Ferrous Plants WinPlant. RED

Note that you are not obliged to search by all the above parameters on the whole. Depending on your aim and the available information, you can select only parameters known to you or required. In this case all the other parameters will be just ignored during the search process.

## View of Search Results

The search findings view procedure contains two windows (see the Figure). There is the *tree of plants, product assortments and specifications* in the upper window while the lower window is designed for *viewing the information* on the plants found as a result of the search and their products as well.



The tree of plants, product assortments and specifications is default contracted, i.e., only *the upper tree level* is screened, namely, *the list of plants and holdings found as a result of the search*. *The next tree level is standards for assortment* in accordance with the selected products are manufactured, and *at the last level there are standards for specifications*.

*The information in the lower window is related to the line highlighted in the upper window and depends on what was highlighted: plant (managing company of holding), standard for product assortment or standard for specifications.*

**If the plant is selected.** If the name of the plant or managing company is highlighted in the upper window, the lower window shows the information on this plant or company. This information contains address, reference phone and fax nos., web-site and e-mail addresses and data on main traders who sell products of the plant.

**If the standard for product assortment or specifications is selected.** If the standard for product assortment or specifications is highlighted in the upper window the lower window shows the information on the products made in accordance with this standard by the plant related in the tree with the highlighted standard. The information on product includes:

- data on *dimensions* of the product made according to the selected assortment (specification);
- data on *non-ferrous grades* which are used to make products of the selected assortment (specification);
- data on *equipment* used for making products of the selected assortment (specification);
- additional data on products (*Remark*) made according to the selected assortment and specifications.

All information on the manufacturers and their products can be *printed or saved in HTML, TXT or XML* files for next work with it in other Windows applications.

# Automated Directory of CIS Non-Ferrous Plants WinPlant. RED

---

## Supply and Installation

### Standard delivery package includes:

- software on CD-ROM;
- comprehensive User's Guide containing detailed information on the software with a lot of samples;
- USB security device (HASP) for illegal copy protection.

The software can be delivered in two optional configurations, i.e. for use on **single PC** in a time or for **network (multi-user) use**.

### Requirements for Hardware and Operating System

- Windows 95 / 98 / NT 4.0 / 2000 / ME / XP / Vista;
- 32 MB of free hard disc storage;
- Pentium / Pentium II / Celeron / Pentium III / Pentium IV;
- 16 MB RAM or more;
- CD-ROM read driver.

### Installation

To install the software it is necessary to have not less than 32 Mb of free space on the hard disk of your PC. The installation is carried out automatically by means of the installation program.

## Support

*The warranty period* for WinPlant. RED software is **12 months** since the date of receiving a copy of the software by a User. During this period our Users:

- receive new software releases (versions) every three months without any additional payment;
- have free access to **WinPlant. RED Online** on our web-site [www.metaldatoonline.com](http://www.metaldatoonline.com);
- are guaranteed with replacement of the defective CD-ROMs and the security device providing the revealed faults resulted not in violation of the rules of installation and use the software, contained in the User's Guide;
- are provided with possibility to use consultations of our Support Service Group.

*During the whole period of the operation with the software* authorised Users are provided with the following:

- subscription to our Annual Support Service with receiving new releases of the software every quarter on completion of the warranty period;
- rights to purchase new versions of the software on "upgrade" terms;
- discounts when buying other software of Quantor-Soft Metal.

### You can contact Quantor-Soft Metal on all questions:



(+ 7 495) 234 4905

**Fax**

(+ 7 495) 232 3996



P.O. Box 39, 119049 Moscow, Russia

**E-mail**

wpred@metaldato.info

**Web-site**

<http://www.metaldato.info>

## Artyomovsk Non-Ferrous Metal Processing Plant

### Address and Phones/Faxes:

AZOCM  
42, Kirova str., Artyomovsk, 84500 Donetsk Region, Ukraine

General Director (+ 38 062) 337 4287  
Commercial Director (+ 38 062) 335 1995  
Sales Department (+ 38 062) 335 4023, 335 1995, 337 0650

E-mai: office@azocm.dn.ua, marketing@azocm.dn.ua  
WWW: <http://www.azocm.dn.ua>

Certificate EN ISO 9002

Donetsk Works "Vtortsvetmet" of PJSC "AZOCM"  
206, Krasnooktyabrskaja Str., Donetsk, 83053, Ukraine  
Tel./Fax: (+ 38 062) 338 2622, 338 2535, 338 2622, 338 1908



## Search Results

### Kirov Non-Ferrous Metal Processing Plant

#### Assortment according to:

**GOST 767-1991**

Copper anodes

#### Dimensions (assortment):

Gauge, mm	Width, mm	Length,mm
2	75 - 600	300 - 2000
3	75 - 600	300 - 2000
4	75 - 600	300 - 2000
5	75 - 600	300 - 2000
6	75 - 600	300 - 2000
7	75 - 600	300 - 2000
8	75 - 600	300 - 2000
10	75 - 600	300 - 2000
11	75 - 600	300 - 2000
12	75 - 600	300 - 2000
15	75 - 600	300 - 2000

#### Alloy grades (assortment):

AMF (CIS countries )

M1 (CIS countries )

**TU 48-21-5045-80**

Anodes of Cu-P alloy

#### Dimensions (assortment):

Gauge, mm	Width, mm	Length,mm
10	25	25

#### Alloy grades (assortment):

MF (CIS countries )

## Search Results

### Stupino Metallurgical Company

#### Plant Address, Phones/Faxes: SMK

Pristantsionnaya Str., Stupino 142800, Moscow Region, Russia

General Manager (+7 49664) 47 000, 47 001, (+7 495) 580 5460 ext. 110  
Deputy General Director (+7 49664) 47 001, 47 002, (+7 495) 580 5460 ext. 110  
Alluminium Rolled Products (+7 49664) 47 041, (+7 495) 580 5465 ext. 226  
Head of Import-Export Department (+7 49664) 47 130, (+7 495) 580 5468 ext.160  
Head of Marketing Department (+7 49664) 47 521, (+7 495) 580 5464 ext. 208

Fax (+7 495) 580 5461, 580 5475

E-mail: [info@smk.ru](mailto:info@smk.ru)

WWW: <http://www.smk.ru>

Certificate AS 9000, DIN EN ISO 9001

#### Assortment according to:

**GOST 18475-1982** Aluminium and aluminium alloy cold-rolled tubes

#### Specifications according to:

**GOST 18475-1982** Aluminium and aluminium alloy cold-rolled tubes. Specifications

#### Dimensions (specifications):

Side, mm	Wall thickness, mm	Length, mm
10	1	1000 - 6000
10	1.50	1000 - 6000
12	1	1000 - 6000
12	1.50	1000 - 6000
14	1	1000 - 6000
14	1.50	1000 - 6000
14	2	1000 - 6000
16	1	1000 - 6000
16	1.50	1000 - 6000
16	2	1000 - 6000
18	1	1000 - 6000

**Search Results**

18	1.50	1000 - 6000
18	2	1000 - 6000
22	1.50	1000 - 6000
22	2	1000 - 6000
22	2.50	1000 - 6000
22	3	1000 - 6000
25	1.50	1000 - 6000
25	2	1000 - 6000
25	2.50	1000 - 6000
25	3	1000 - 6000
28	1.50	1000 - 6000
28	2	1000 - 6000
28	2.50	1000 - 6000
28	3	1000 - 6000
28	4	1000 - 6000
40	2	1000 - 6000
40	2.50	1000 - 6000
40	3	1000 - 6000
40	4	1000 - 6000
48	2.50	1000 - 6000
48	3	1000 - 6000
48	4	1000 - 6000
60	4	1000 - 6000
60	5	1000 - 6000

**Alloy grades (specifications):**

1110 (CIS countries )	1160 (CIS countries )	1520 (CIS countries )	1530 (CIS countries )
AMg2 (CIS countries )	AMg3 (CIS countries )	D1 (CIS countries )	D16 (CIS countries )

**OST 1-92096-83**                      Seamless cold-deformed tubes of aluminium and aluminium alloys

**Search Results**

**Specifications according to:**

**OST 1-92096-83**                      Seamless cold-deformed tubes of aluminium and aluminium alloys

**Dimensions (specifications):**

<b>Side, mm</b>	<b>Wall thickness, mm</b>	<b>Length, mm</b>
10 - 75	1 - 5	1000 - 6000

**Alloy grades (specifications):**

1110 (CIS countries )	1160 (CIS countries )	1520 (CIS countries )	1530 (CIS countries )
AMg2 (CIS countries )	AMg3 (CIS countries )	D1 (CIS countries )	D16 (CIS countries )