

# Do you wish to purchase steel or non-ferrous products in CIS?



**We'll help you!**

## **WinPlant - Automated Directory of CIS Steel and Metal Plants**

**Information on more than 500 steel and non-ferrous manufacturers in CIS and Baltic States and their products**

**Information on each plant includes:**

- ☐ mail address, contact phone and fax nos. of main departments, E-mail address, Web-site;
- ☐ list of main product traders and their contact data;
- ☐ list of main process equipment;
- ☐ detailed information on products with references to standards on assortment and specifications, with indication of grades and main dimensions.

**WinPlant database consists of two parts:**

- ☐ **WinPlant. BLACK** - includes information on producers of steel and iron;
- ☐ **WinPlant. RED** - contains data on manufacturers of non-ferrous products.

**Information in WinPlant database is currently corrected and updated. Every three months we issue new software releases.**

**Quantor-Soft Metal**

Phone: +7 495 234 4905

Fax: +7 495 232 3996

Mail address: P.O.Box 39, 119049 Moscow, Russia

E-mail: [inform@metaldata.info](mailto:inform@metaldata.info)

Web: [www.metaldata.info](http://www.metaldata.info)

## Features:

- ☐ Ability to find plants manufacturing steel or non-ferrous products you need;
- ☐ Ability to get detailed information on products manufactured by any plant;
- ☐ Inquiry information on Russian steels and alloys and present-time standards.

## Benefits:

- ☐ Fast searching of manufactures of products you need within seconds;
- ☐ Ensure that you have the most complete and up-to-date information on CIS steel and non-ferrous plants;
- ☐ Printing and saving in HTML, TXT and XML files data on plants and their products;
- ☐ Context Help and comprehensive User's Guides with illustrations of operation with the software;
- ☐ Possibility to operate with all major network hardware and software.

## With your purchase you receive:

- ☐ Unlimited license to use the software;
- ☐ Our technical Support Service;
- ☐ New software releases every quarter without additional payments during the warranty period of 12 months;
- ☐ Free access to the Online software versions during the warranty period;
- ☐ Ability to subscribe to our Annual Support Service on completion of the warranty period;
- ☐ Hot information on new software versions with ability to buy upgrades.

## Order Form

Software	For single PC	Multi - User		Amount
		2-5 Users	6-10 Users	
WinPlant. BLACK	€350 - ____	€525 - ____	€700 - ____	€ ____
WinPlant. RED	€350 - ____	€525 - ____	€700 - ____	€ ____
WinPlant. BLACK + RED	€630 - ____	€945 - ____	€1260 - ____	€ ____
Delivery by courier				€50
Total Amount				€ ____

Name / Position \_\_\_\_\_

Company \_\_\_\_\_

Address \_\_\_\_\_

Tel \_\_\_\_\_ Fax \_\_\_\_\_ E-mail \_\_\_\_\_

☐ Please send me Invoice for wire payment

☐ Please debit my card: ☐ VISA ☐ MasterCard / EuroCard

Card Number \_\_\_\_\_

Valid Thru \_\_\_\_\_

CardHolder \_\_\_\_\_

CVC2 / CVV2 \_\_\_\_\_

Date \_\_\_\_\_

Signature \_\_\_\_\_

**Quantor-Soft Metal**

Phone: +7 495 234 4905

Fax: +7 495 232 3996

Mail address: P.O.Box 39, 119049 Moscow, Russia

E-mail: [inform@metalddata.info](mailto:inform@metalddata.info)

Web: [www.metalddata.info](http://www.metalddata.info)



# **Automated Directory of CIS Steel Plants**

## **WinPlant. BLACK**

---

### **What are the Main Advantages of WinPlant. BLACK over the Plant Product Catalogues?**

- The WinPlant. BLACK software combines catalogues of more than 570 plants. It allows to save your time providing fast search of manufacturers of steel products you need.
- Search in the WinPlant. BLACK software is multichoice. Operating with the program you are able not only to learn which products are manufactured by any plant but also to find mills which manufacture the products required by you.
- Information in the WinPlant. BLACK database is constantly updated. Operating with the software you can be sure that your PC contains the most up-to-date data on CIS steel mills and their products.

### **What Does WinPlant. BLACK Differ from the Similar Software by?**

- We offer you not only complete database with information on products manufactured by different plants in CIS but also the software providing simple and efficient operation with the database involved.
- Search for manufacturers in the WinPlant. BLACK software is carried out by several criteria: product type, standards (GOSTs, TUs or foreign) on assortment and specifications, steel grades and dimensions.
- The WinPlant. BLACK database has a high-optimized structure. Information on all steel products manufactured by 570 plants in Russia, Ukraine and other CIS countries takes 115 MB on hard disk of your PC only.
- All information in the WinPlant. BLACK database is constantly corrected and updated. Every quarter we issue new software releases, which you will receive free of charge during the warranty period of 12 months.
- Besides offline software version on CD-ROM we'll give you access to WinPlant. BLACK Online. It allows you to get required information even when you are out of your office.
- WinPlant. BLACK possesses friendly interface provided with the comprehensive User's Guide with illustrations of operating with the software and Help.

# Automated Directory of CIS Steel Plants

## WinPlant. BLACK

---

### General Information

**WinPlant. BLACK** is original user-friendly software for searching manufacturers of required steel products in Russia, Ukraine and other CIS countries.

#### **The WinPlant. BLACK software helps you:**

- to obtain detailed information on plants and their product ranges;
- to find mills, which manufacture steel products of your concern;
- to get reference data on steel grades and valid standards.

### **Database**

#### **Information on Plants**

The database of **WinPlant. BLACK**, ver. 4.0 software includes information on more than **570 plants and holding companies** in CIS and neighboring countries, which produce:

- *cast and steelmaking iron,*
- *ingots and concast billets,*
- *flat rolled products,*
- *long rolled products,*
- *tubes and pipes,*
- *wire,*
- *rolled-formed profiles,*
- *wheels, tyres, rings,*
- *forgings.*

Information on each plant includes:

- mail address, contact phone and fax nos. of main departments, e-mail and web-site addresses;
- data on product quality certificates;
- list of main product traders and their contact data;
- list of main process equipment;
- detailed information on products manufactured by the plant.

#### **Information on Products**

The information on steel products made by each plant includes:

- *name of a product* according to classification applied in the software;
- name of a product *assortment* with reference to relevant standard (GOST, TU or foreign);
- reference to standard for *specifications* of the steel product;
- list of *steel grades* the product is manufactured from;
- main *dimensions* of products.

Moreover, the database incorporates information on *equipment* steel products are made at and some additional data on manufactured products (the *Remark* field).

The database employs *the classification of steel product types* presented in the Figure in tree form. The upper tree level is the names of nine general steel product groups included into the database (*cast and steelmaking iron, concast billets and ingots, flat rolled products, forgings, long rolled products, roll-formed profiles, tubes and pipes, wheels, tyres, rings, wire*). The next tree levels are the names of product types within each group.

In the classification, each type of steel product is related to standards (GOSTs, TUs or foreign ones) according to which this product is made. Here the standards are divided into two groups:

- *Standards on assortment*, which define a product geometry (dimensions, tolerances, etc.);
- *Standards for specifications*, which define mechanical and other properties of a product.

Besides GOST numbers and names, the database also contains information on validity of standards and data on what obsolete standards they replaced.

# Automated Directory of CIS Steel Plants

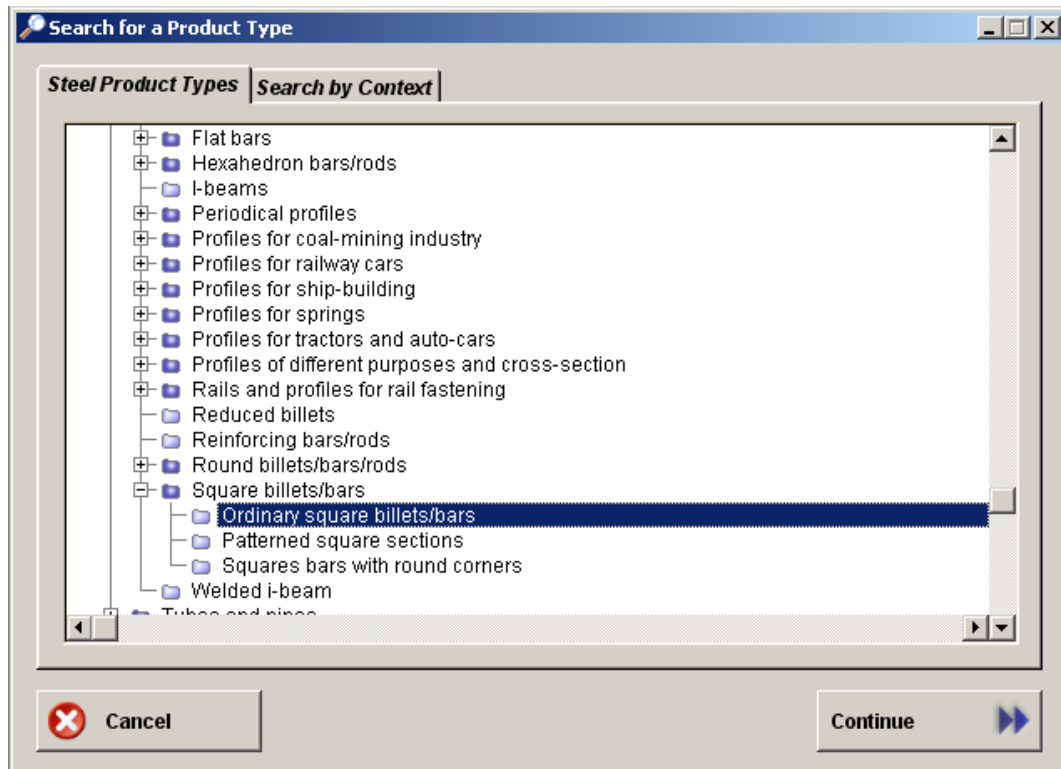
## WinPlant. BLACK

---

### How to Find Required Information in the Database

#### Search Criteria

The criteria of search are identified in two stages. At the first stage the required product type is selected using the tree presented in the Figure. At the second stage the parameters (additional criteria) according to which the search procedure will be carried out and the value of these parameters are input.



Two ways are possible to select a required product type: *by shifting with step-by-step manual extracting* of required tree branches or *by context*. *Context* is a fragment of steel product name. It can completely or partially coincide with the name of one of the product tree branches or it can be a part of the name of the product assortment (or standard) in accordance with which the product is made.

You can use the following parameters for the search for manufacturers of the selected product type:

**Search by Plant.** The parameter of search by plants is intended to select mills, which will be included into the search process. Here three variants are possible:

- to search *among all the plants* included into the software database;
- to search only among plants located in one *region*;
- to search only among plants *selected* directly by a user.

**Search by Assortment.** When using this parameter you can limit your search only to the product, which is made according to the required standards for assortment. At that you can select one or several assortment standards for the search.

**Search by Specifications.** This search parameter is used for the same purpose as the preceding one. On its selection, you can limit your search to desired standards for specifications of the products.

**Search by Steel Grades.** This search parameter will permit steel grades used for product making to be selected. The required grades are selected in the total list, which includes all steels referred to in the database.

**Search by Dimensions.** Here you can input required steel product dimension limits. You can use only the necessary dimension values. The other dimension values will not be taken into consideration.

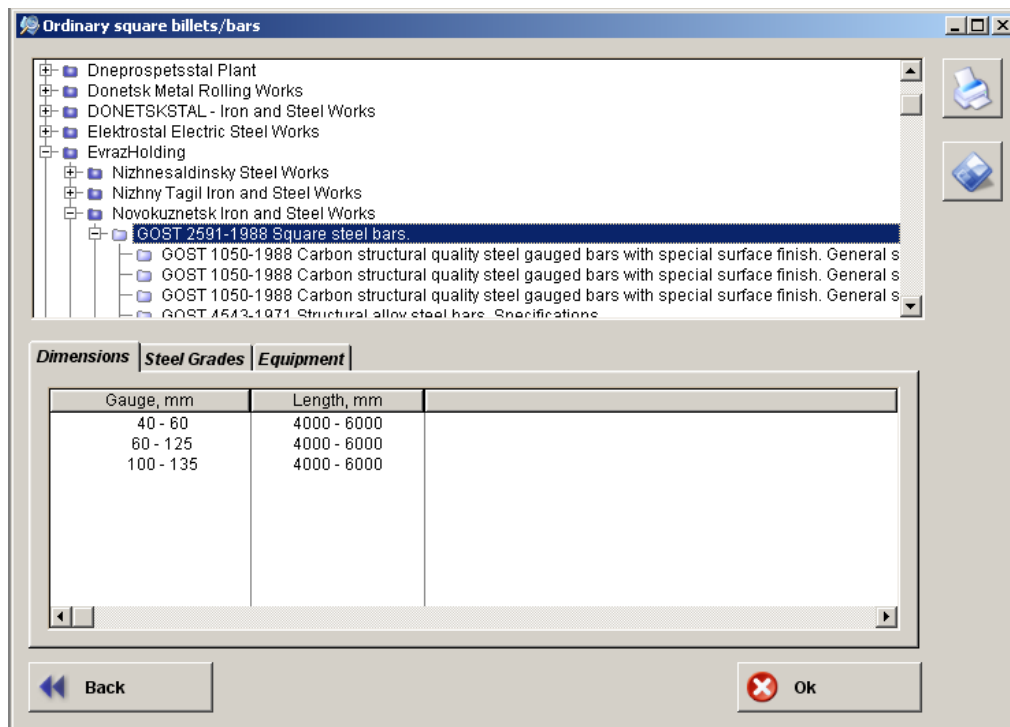
# Automated Directory of CIS Steel Plants

## WinPlant. BLACK

Note that you are not obliged to search by all the above parameters on the whole. Depending on your aim and the available information, you can select only parameters known to you or required. In this case all the other parameters will be just ignored during the search process.

### View of Search Results

The search findings view procedure contains two windows (see the Figure). There is the *tree of plants, product assortments and specifications* in the upper window while the lower window is designed for *viewing the information* on the plants found as a result of the search and their products as well.



The tree of plants, product assortments and specifications is default contracted, i.e., only *the upper tree level* is screened, namely, *the list of plants and holdings found as a result of the search*. *The next tree level is standards for assortment* in accordance with the selected products are manufactured, and *at the last level* there are *standards for specifications*.

*The information in the lower window is related to the line highlighted in the upper window and depends on what was highlighted: plant (managing company of holding), standard for product assortment or standard for specifications.*

**If the plant is selected.** If the name of the plant or managing company is highlighted in the upper window, the lower window shows the information on this plant or company. This information contains address, reference phone and fax nos., web-site and e-mail addresses and data on main traders who sell products of the plant.

**If the standard for product assortment or specifications is selected.** If the standard for product assortment or specifications is highlighted in the upper window the lower window shows the information on the products made in accordance with this standard by the plant related in the tree with the highlighted standard. The information on product includes:

- data on *dimensions* of the steel product made according to the selected assortment (specification);
- data on *steel grades* which are used to make products of the selected assortment (specification);
- data on *equipment* used for making products of the selected assortment (specification);
- additional data on products (*Remark*) made according to the selected assortment and specifications.

All information on the manufacturers and their products can be *printed* or *saved in HTML, TXT or XML* files for next work with it in other Windows applications.

# Automated Directory of CIS Steel Plants WinPlant. BLACK

---

## Supply and Installation

### Standard delivery package includes:

- software on CD-ROM;
- comprehensive User's Guide containing detailed information on the software with a lot of samples;
- USB security device (HASP) for illegal copy protection.

The software can be delivered in two optional configurations, i.e. for use on **single PC** in a time or for **network (multi-user) use**.

### Requirements for Hardware and Operating System

- Windows 95 / 98 / NT 4.0 / 2000 / ME / XP / Vista;
- 115 MB of free hard disc storage;
- Pentium / Pentium II / Celeron / Pentium III / Pentium IV;
- 16 MB RAM or more;
- CD-ROM read driver.

### Installation

To install the software it is necessary to have not less than 115 Mb of free space on the hard disk of your PC. The installation is carried out automatically by means of the installation program.

## Support

*The warranty period* for WinPlant. BLACK software is **12 months** since the date of receiving a copy of the software by a User. During this period our Users:

- receive new software releases (versions) every three months without any additional payment;
- have free access to **WinPlant. BLACK Online** on our web-site **[www.metaldataonline.com](http://www.metaldataonline.com)**;
- are guaranteed with replacement of the defective CD-ROMs and the security device providing the revealed faults resulted not in violation of the rules of installation and use the software, contained in the User's Guide;
- are provided with possibility to use consultations of our Support Service Group.

*During the whole period of the operation with the software* authorised Users are provided with the following:

- subscription to our Annual Support Service with receiving new releases of the software every quarter on completion of the warranty period;
- rights to purchase new versions of the software on upgrade terms;
- discounts when buying other software of Quantor-Soft Metal.

### You can contact Quantor-Soft Metal on all questions:



(+ 7 495) 234 4905

**Fax**

(+ 7 495) 232 3996



P.O. Box 39, 119049 Moscow, Russia

**E-mail**

[wpblack@metaldata.info](mailto:wpblack@metaldata.info)

**Web-site**

<http://www.metaldata.info>

## Almetyevsky Tube Manufacturing Plant

### Address and Phones/Faxes:

ATZ  
Promzona-11, Almetjevsk, Tatarstan, 423450 Russia

General Director	(+7 8553) 259 393
Commercial Director	(+7 8553) 259 347
Head of Sales Department	(+7 8553) 259 356
Marketing Department	(+7 8553) 259 647
Foreign Relations Department	(+7 8553) 259 083
Sales Department	(+7 8553) 253 439, 259 310

Fax ( +7 8553) 259 374, 259 647

E-mail: [market@atz.ru](mailto:market@atz.ru), [sale@atz.ru](mailto:sale@atz.ru)

WWW: <http://www.atz.ru>

TAL Ltd. - inner insulation of tubes ( +7 8553) 221 476

Certificates API Q1 and ISO 9002:1994.



## Search Results

### Zaporizhstal Iron and Steel Works

#### Assortment according to:

**GOST 13345-1985**                      Black plate

#### Specifications according to:

**GOST 13345-1985**                      Tin-plate and black plate. Specifications.

#### Dimensions (specifications):

Gauge, mm	Width, mm
0.20 - 0.45	450 - 550

#### Steel grades (specifications):

08kp (CIS countries )	08ps (CIS countries )
-----------------------	-----------------------

**GOST 13345-1985**                      Tin-plate and black plate. Specifications.

#### Dimensions (specifications):

Gauge, mm	Width, mm
0.20 - 0.32	310 - 370

#### Steel grades (specifications):

08kp (CIS countries )	08ps (CIS countries )
-----------------------	-----------------------

**TU 14-1-1257-75**                      Cold-rolled carbon quality structural steel black plate

#### Dimensions (specifications):

Gauge, mm	Width, mm
0.20 - 0.45	450 - 550

#### Steel grades (specifications):

08kp (CIS countries )
-----------------------

## Search Results

### Byelorussian Steel Works

**Plant Address, Phones/Faxes:** Republican Unitary Enterprise "Byelorussian Steel Works"  
37, Promyshlennaya Str., 247210 Zhlobin, Gomel region, Republic of Belarus

Works Director	(+375 2334) 22 993, fax 24 261
Commercial Director	(+375 2334) 54 415
Sales Department	(+375 2334) 24 493, 55 061, 56 183, 56 648
Head of Sales Department	(+375 2334) 54 682
Foreign Relations Department	(+375 2334) 56 014
Marketing Department	(+375 2334) 54 821, 54 492, 54 890 fax 24 705

E-mail: ows@bmz.gomel.by, br.osm@bmz.gomel.by  
E-mail: ofwork@bmz.gomel.by, zak.osm@bmz.gomel.by, over@bmz.gomel.by  
WWW: <http://www.belsteel.com>

Certificate BS EN ISO 9001:2000  
Certificate QS ISO 9002 TUV Berlin-Brandenburg,  
Certificate QS 9000 "TUV CERT Anlagentechnik GmbH", SBS certificate,  
Certificates of KIWA, MPA NRW, ZETOM, CARES, SLV DUISBURG GmbH, TZUS

### Assortment according to:

**TU 14-1-4492-88** Square billets

### Specifications according to:

**TU 14-1-4492-88** Square billets and blooms

Rolled products of normal precision are manufactured.  
2 quality group - ultrasonic control of internal defects.  
Enhanced packing. Enhanced cutting length precision.  
No crushed ends. Curvature is 0.2% of length.

2 category (no pickling with removing defects)

### Dimensions (specifications):

Gauge, mm	Length, mm
100	6000 - 12000
125	6000 - 12000

## Search Results

### Steel grades (specifications):

1018 (USA )	1026 (USA )	1030 (USA )	1045 (USA )
12ChN3A (CIS countries )	16 MnCr 5 (Germany )	18ChGT (CIS countries )	20ChGM (CIS countries )
20G2R (CIS countries )	25ChGS (CIS countries )	35 (CIS countries )	35ChGSA (CIS countries )
40 (CIS countries )	40Ch (CIS countries )	40ChN (CIS countries )	4140 (USA )
42 CrMo 4 (Germany )	45 (CIS countries )	45G (CIS countries )	50 (CIS countries )
55 (CIS countries )	60S2A (CIS countries )	65 (CIS countries )	65G (CIS countries )
70 (CIS countries )	75 (CIS countries )	80 (CIS countries )	8620 (USA )
Ck 15 (Germany )	Ck 35 (Germany )	Ck 40 (Germany )	RSt 37-2 (Germany )
St 52-3 (Germany )	St3sp (CIS countries )	St5ps (CIS countries )	St6sp (CIS countries )